



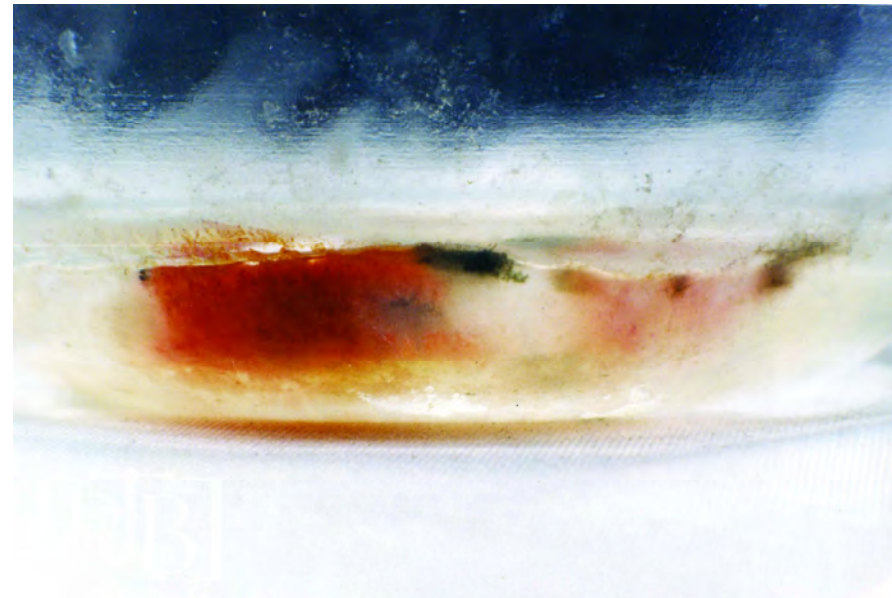
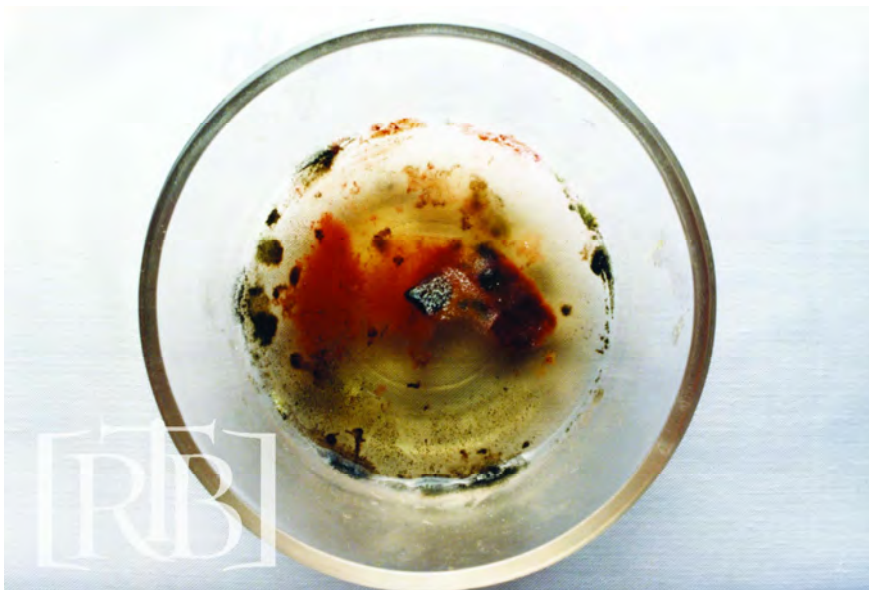
# Scientifically Investigated Miracles of the Holy Eucharist Part Two

# The Host of Buenos Aires – 1996

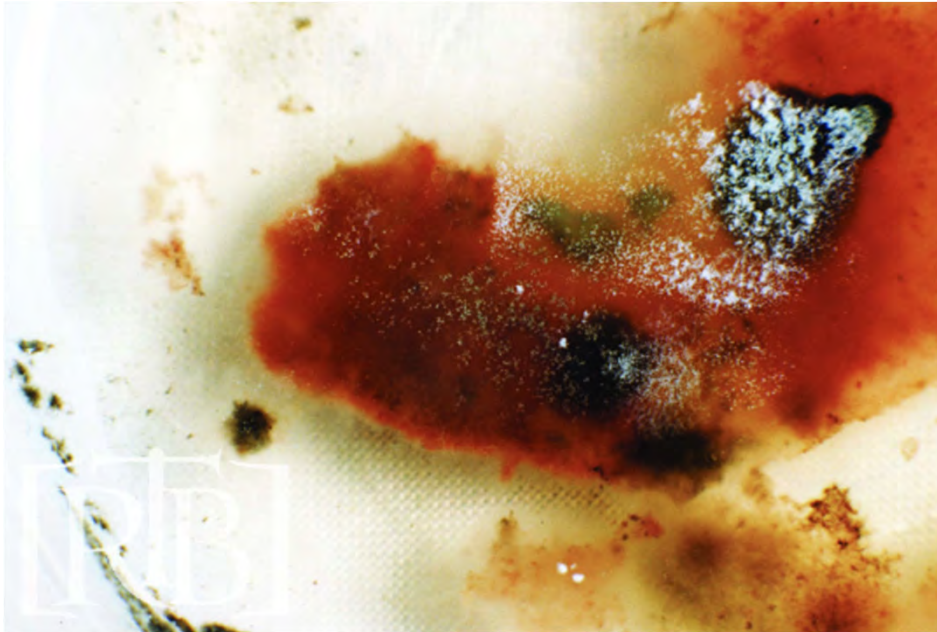
1. CONTEXT: A host was discarded in Buenos Aires Church (Santa Maria Y Callito Almagro). Pastor/sacristan put it in water – validated chain of custody, second inspection of host shows tissue growing out of it. The host is photographed under direction of Archbishop Bergoglio. The host is left in the tabernacle for three years – *with no decomposition*. Dr. Ricardo Castañón Gomez is asked to oversee the scientific testing. He in turn conveys an unidentified sample of the host to Frederick Zugibe (expert pathologist in NYC). Who identified the special characteristics of the tissue. Dr. Castanon Gomez a former atheist converts to Catholicism and becomes an active proponent of Eucharistic theology.

# THE BUENOS AIRES HOST

WOULD THE CATHOLIC CHURCH HAVE SANCTIONED THE TORTURE OF A HUMAN BEING AND HIS SUBSEQUENT MURDER IN ORDER TO REMOVE A PIECE OF LIVING HEART TISSUE WHILE THE VICTIM WAS STILL ALIVE?



# THE BUENOS AIRES HOST







Dr. Ricardo Castanon Gomez



Dr. Frederick Zugibe

# THE BUENOS AIRES HOST

**The analyzed material is a fragment of the heart muscle found in the wall of the left ventricle close to the valves. This muscle is responsible for the contraction of the heart. It should be borne in mind that the left cardiac ventricle pumps blood to all parts of the body. The heart muscle is in an inflammatory condition and contains a large number of white blood cells. This indicates that the heart was alive at the time the sample was taken. It is my contention that the heart was alive, since white blood cells die outside a living organism. They require a living organism to sustain them. Thus, their presence indicates that the heart was alive when the sample was taken. What is more, these white blood cells had penetrated the tissue, which further indicates that the heart had been under severe stress, as if the owner had been beaten severely about the chest.**

# THE MIRACULOUS NATURE OF THE HOST

1. After one month in tap water and three years in sterilized water, there should be no identifiable morphological characteristics in the tissue. However, such characteristics are readily identifiable the absence of notable decomposition is scientifically inexplicable.
2. The tissue is growing out of the host (see photograph #2). This phenomenon is more clearly seen in Sokolka, Poland under electron microscope analysis. The integration of the substance of the host with the substance of heart tissue is scientifically inexplicable.
3. The tissue is from the upper part of the left ventricle of the heart near the valve area. (Zugibe) The blood type is AB the same as other hosts and the shroud.
4. The tissue is alive, supporting active macrophages and white blood cells (which must be attached to a circulatory system in order to remain alive and active) -- (Zugibe and Castanon Gomez). Living white blood cells in living tissue detached from a circulatory system is scientifically inexplicable.

# THE MIRACULOUS NATURE OF THE HOST CONTINUED

5. The heart tissue is in the process of dying as indicated by a loss of striations and nuclear pyknosis (the stage before nuclear fragmentation and death) - Zugibe.
6. The tissue has suffered either a severe blow or myocardial infarction as evidenced by the activity of white blood cells and the fact that they have penetrated the tissue. (Zugibe)
7. The DNA problem: how can there be remnants of DNA molecules, but these are not amplifiable into DNA profiles. This is similar to other Eucharistic hosts Why?



# THE HOST OF TIXTLA, MEXICO (2006)

- **CONTEXT:** IN 2006, In Tixtla, Mexico, a religious sister who had selected a host for distribution to the sick noticed that it was effusing blood in the pix. She showed it to two priests who had it placed in a tabernacle with a verified chain of custody. The host was so obviously transformed that ecclesiastical authorities contacted Dr. Castañón Gomez right away. He did not wait three years to begin testing (like the Buenos Aires host) and formed a team of scientific experts.
- **THE TEAM:** The scientific commission included several scientists, physicians, and laboratories: an anatomical pathologist, two experts in surgical histopathology, experts in DNA biotechnology, forensic genetics, biochemistry and pharmacy, an expert in legal and forensic medicine, and two computer imaging experts.
- **EXCELLENCE AND THOROUGHNESS OF TESTING:**
  - Unquestioned and brief chain of custody.
  - 13 different analytical and pathological tests with six different laboratories.
  - The presence of living white blood cells and active macrophages was attested to by multiple witnesses.
  - The bishop approved it because scientific tests were so conclusive.

# THE HOST OF TIXTLA, MEXICO (2006)

- NOTABLE FEATURES:
  - HUMAN LIVING BLOOD: Blood is human - specifically human hemoglobin, whole blood, immunoglobulins, active red blood cells and active white blood cells, and macrophages engulfing lipids, blood type AB (same as other hosts). Thus, the blood is fresh and living.
  - FLOW OF BLOOD: There is living tissue seamlessly integrated in the center of the host in which there is a hole through which fresh blood is being produced and pushed from the interior of the host to the exterior of the host. There is no doubt that fresh blood is being produced and the flow is from the interior to the exterior.
  - LIVING HEART TISSUE: Though it is difficult to directly identify striated cardiac muscle fibers, the presence of elongated cells (typical of striated cardiac muscle fibers) and other discoveries from the microscopic-molecular analysis, strongly suggests that it is heart tissue. Furthermore, the heart tissue is living - as implied by active red blood cells and active white blood cells (showing dynamic activity) in the tissue.

# MIRACULOUS DIMENSIONS: TIXTLA, MEXICO (2006)

**There are four scientifically inexplicable dimensions of the Tixtla host:**

1. There is a thin filament of tissue in the center of the Host from which blood is exuding. Histochemical tests indicate cardiac tissue (Sánchez Loza et al). The tissue seems to be integrated with the Host which is scientifically inexplicable.
2. The cardiac tissue is alive – presence of active red blood cells, and white blood cells/ macrophages in the process of healing. Since tissue dies shortly after being disconnected from a body and circulatory system, the presence of living tissue and blood (after three months – time between the miracle and the tests) is scientifically inexplicable.
3. The Host-tissue is exuding fresh blood from the inside to the outside. Blood on the exterior of host is produced in 2006 while blood on the inside of host is fresh as of 2010. The pressure of natural flow is from the inside to the outside. Which is scientifically inexplicable.
4. The DNA conundrum – DNA material, but no amplifiable profile (see below).  
[http://www.therealpresence.org/eucharst/mir/english\\_pdf/Tixtla2.pdf](http://www.therealpresence.org/eucharst/mir/english_pdf/Tixtla2.pdf)

# THE TIXTLA, MEXICO HOST



“Technical reliefs and scientific studies highlight the authenticity and reality of an event far from any natural cause that science can explain... Science ensures the reliability of the results by keeping them away from any type of natural artifact of human manipulation... Therefore, the Bishop of Chilpancingo-Chilapa has pronounced [that the event is attributable] to a supernatural causality.”

OFFICIAL STATEMENT OF THE CATHOLIC CHURCH - DIOCESE OF CHILPANCINGO-CHILAPA

# THE DNA CONUNDRUM

1. In the Buenos Aires Host (1996) and the Tixtla, Mexico, there is evidence of DNA material fragments. However, there is no amplifiable profile.
2. Autolysis may explain the absence of profile in 1996 Buenos Aires Host, because a long period of time elapsed between the miracle and genetic testing. The Buenos Aires Host was in tap water for one month and sterile water for three years. **However**, the Tixtla Host was tested only three months after - not enough time for complete autolysis.
3. Given that the samples were more than large enough for profiling that complete autolysis is unlikely, and that DNA material is present, how can the absence of DNA profile be explained.
  - Did the supernatural agent want to keep it hidden?
  - If there was no male genetic contribution, could this effect the presence of a profile.
  - Might it be both?



# REFERENCES

1. See Dr. Ricardo Castañón Gomez, 2014 Cronica De Un Milagrero Eucaristico: Esplendor en Tixtla Chilpancingo, Kindle, Mexico: Grupo Internacional Para La Paz (GIPLAP).  
<https://www.amazon.com/Cr%C3%B3nica-Milagro-Eucar%C3%ADstico-Esplendor-Chilpancingo-ebook/dp/B00OQGJG40>
2. English translation of English chapters available on request.
3. Frederick T. Zugibe 2005, “Testimonial given in an interview with Mike Willesee and Ron Tesoriero on March 15, 2005,” in E-mail report, available upon request
4. Frederick Zugibe pathology report on Buenos Aires Host - available on request.
5. See Mieczyslaw Piotrowski 2010, “Eucharistic Miracle in Buenos Aires,” quoted in “Eucharistic miracle beheld by Pope Francis?” Aleteia,  
<https://aleteia.org/2016/04/22/eucharistic-miracle-beheld-by-pope-francis/>.
6. “Eucharistic Miracle of Tixtla, October 21, 2006 The Real Presence  
[http://www.therealpresence.org/eucharst/mir/english\\_pdf/Tixtla2.pdf](http://www.therealpresence.org/eucharst/mir/english_pdf/Tixtla2.pdf)